



16 Concord Place

Grimsby, ON

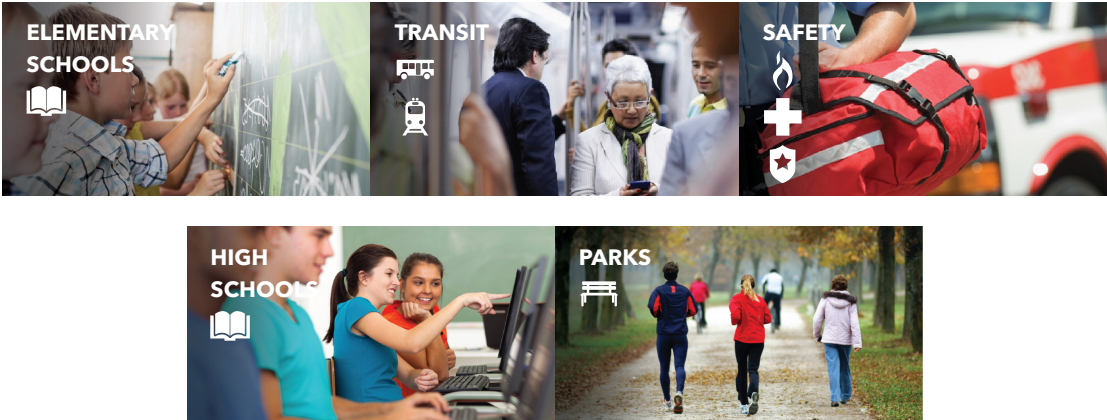
HOODQ DETAILED REPORT™

Mike Heddle | Broker

905.574.7441

<http://www.TheHeddleGroup.ca>





PUBLIC SCHOOLS (ASSIGNED)

Your neighbourhood is part of a community of Public Schools offering Elementary, Middle, and High School programming. See the closest Public Schools near you below:

Smith PS

 about a 19 minute walk - 1.41 KM

Pre-Kindergarten, Kindergarten, Elementary and Middle

18 Oakes Rd N, Grimsby, ON L3M 4B1, Canada

We have approximately 325 students at Smith Public School from Junior Kindergarten to Grade 8. We have a beautiful library, large computer lab, gymnasium, 14 homeroom classrooms, 4 portables, large sports' fields, playground equipment, an outdoor classroom, and a YMCA Daycare Program is offered before/after school on the premises.

<http://smith.dsbni.org...>

Address	18 Oakes Rd N, Grimsby, ON L3M 4B1, Canada
Language	English
Date Opened	01-09-1969
Grade Level	Pre-Kindergarten, Kindergarten, Elementary and Middle
School Type	Public
Phone Number	905-945-8014
School Board	DSB Niagara
School Number	517453
Grades Offered	PK to 8
School Board Number	B66150
District Description	London Regional Office

Grimsby SS

2.64 KM away

High

5 Boulton Ave, Grimsby, ON L3M 1H6, Canada

Grimsby Secondary School exudes excellence. Academics, sports, clubs, activities, community involvement, G.S.S. does it all. We can do it, because we have the best students and staff who challenge themselves to be the best they can be. Our motto, "semper paratus," (always ready) describes our approach to all challenges. The scholastic and athletic preparedness and success of our students is recognized at post secondary institutions throughout North America.

<http://grimsbyss.dsbnschools.ca/>

Address	5 Boulton Ave, Grimsby, ON L3M 1H6, Canada
Language	English
Date Opened	01-09-1969
Grade Level	High
School Type	Public
Phone Number	905-945-5416
School Board	DSB Niagara
School Number	914517
Grades Offered	9 to 12
Additional Details	French Immersion
School Board Number	B66150
District Description	London Regional Office

Central French Immersion PS

2.83 KM away

Elementary and Middle

10 Livingston Ave, Grimsby, ON L3M 1K7, Canada

We are pleased to provide an outstanding education at Central French Immersion Public School for our students. Innovative programs that meet the needs of all our students are taught by our dedicated and professional staff who care about your child. Our school provides extra-curricular opportunities that encourage the development of excellence, integrity and respect.

<http://central.dsbnschools.ca/>

Address	10 Livingston Ave, Grimsby, ON L3M 1K7, Canada
Language	English
Date Opened	01-09-1969
Grade Level	Elementary and Middle
School Type	Public
Phone Number	905-945-5459
School Board	DSB Niagara
School Number	094978
Grades Offered	1 to 8
Additional Details	French Immersion
School Board	

Number	B66150
District	London Regional Office
Description	

ÉE Pavillon de la jeunesse

18.36 KM away

Pre-Kindergarten, Kindergarten and Elementary

105 High St, Hamilton, ON L8T 3Z4, Canada

<https://csviamonde.ca...>

Address	105 High St, Hamilton, ON L8T 3Z4, Canada
Language	French
Date Opened	01-09-2000
Grade Level	Pre-Kindergarten, Kindergarten and Elementary
School Type	Public
Phone Number	905-318-3816
School Board	CS Viamonde
School Number	165484
Grades Offered	PK to 6
School Board	B66303
Number	
District	Toronto and Area Regional Office
Description	

É Élé Renaissance

20.99 KM away

Pre-Kindergarten, Kindergarten and Elementary

1226 Lockhart Rd, Burlington, ON L7S 1H1, Canada

É Élé Renaissance est une école élémentaire de langue française du CSViamonde à Burlington.

<https://csviamonde.ca...>

Address	1226 Lockhart Rd, Burlington, ON L7S 1H1, Canada
Language	French
Grade Level	Pre-Kindergarten, Kindergarten and Elementary
School Type	Public
Phone Number	905-637-3852
School Board	CS Viamonde
School Number	165425
Grades Offered	PK to 6
School Board	B66303
Number	

ÉS Georges-P-Vanier

24.72 KM away

High and Middle

100 Macklin St N, Hamilton, ON L8S 3S1, Canada

<https://csviamonde.ca...>

Address	100 Macklin St N, Hamilton, ON L8S 3S1, Canada
Language	French
Date Opened	03-09-1974
Grade Level	High and Middle
School Type	Public
Phone Number	905-528-0301
School Board	CS Viamonde
School Number	907308
Grades Offered	7 to 12
Additional Details	Advanced Placement
School Board Number	B66303
District Description	Toronto and Area Regional Office

DSBN Academy

28.24 KM away

High and Middle

130 Louth St, St Catharines, ON L2S 2T4, Canada

At DSBN Academy, we share a common goal for each and every one of our students. We want our students to be prepared to distinguish themselves academically and be competitively eligible for admission to a college or university. Most importantly, we want them to graduate from college or university and we believe in our key strategies to supporting this vision.

<http://academy.dsbn.org...>

Address	130 Louth St, St Catharines, ON L2S 2T4, Canada
Language	English
Date Opened	02-09-2013
Grade Level	High and Middle
School Type	Public
Phone Number	905-684-8708
School Board	DSB Niagara
School Number	935455
Grades Offered	6 to 12
School Board Number	B66150
District Description	London Regional Office

CATHOLIC SCHOOLS (ASSIGNED)

Your neighbourhood is part of a community of Catholic Schools offering Elementary, Middle, and High School programming. See the closest Catholic Schools near you below:

Blessed Trinity Catholic SS

1.86 KM away

High

145 Livingston Ave, Grimsby, ON L3M 5J6, Canada

We are a Catholic secondary school serving the west end of the Niagara Catholic District School Board and offering programs from Grades 9 - 12. We celebrate the Gospel values as a foundation for our curriculum and co-instructional activities.

<https://www.blessedtrinitycatholic.com...>

Address	145 Livingston Ave, Grimsby, ON L3M 5J6, Canada
Language	English
Date Opened	01-09-1994
Grade Level	High
Orientation	Catholic
School Type	Public
Phone Number	905-945-6706
School Board	Niagara CDSB
School Number	690791
Grades Offered	9 to 12
Additional Details	Religious and French Immersion
School Board Number	B67156
District Description	London Regional Office

Our Lady of Fatima CS

2.44 KM away

Pre-Kindergarten, Kindergarten, Elementary and Middle

69 Olive St, Grimsby, ON L3M 2C5, Canada

Our Lady of Fatima is as dynamic a faith community, dedicated to spiritual development, as it is a committed community of life long learners working together to meet diverse needs. We are one of two Catholic elementary schools located in Grimsby.

<https://schools.niagaracatholic.ca...>

Address	69 Olive St, Grimsby, ON L3M 2C5, Canada
Language	English
Date Opened	01-09-1969
Grade Level	Pre-Kindergarten, Kindergarten, Elementary and Middle
Orientation	Catholic
School Type	Public
Phone Number	905-945-5500
School Board	Niagara CDSB
School Number	742155
Grades Offered	PK to 8
Additional Details	Religious
School Board Number	B67156
District Description	London Regional Office

ÉE Catholique Immaculée-Conception

29.03 KM away

Pre-Kindergarten, Kindergarten, Elementary and Middle

153 Church St, St. Catharines, ON L2R 3E2, Canada

Notre école accueille les élèves de la maternelle (4 ans) à la 8e année. Elle offre une éducation de qualité dans un environnement catholique de langue française. Notre communauté est très unie et impliquée, le personnel enseignant est dynamique et engagé.

<https://ic.cscmonavenir.ca...>

Address	153 Church St, St. Catharines, ON L2R 3E2, Canada
Language	French
Date Opened	01-09-1969
Grade Level	Pre-Kindergarten, Kindergarten, Elementary and Middle
Orientation	Catholic
School Type	Public
Phone Number	905-682-6732
School Board	CS catholique MonAvenir
School Number	722510
Grades Offered	PK to 8
Additional Details	Before/After School and Religious
School Board Number	B67318
District Description	Toronto and Area Regional Office

ÉSC Saint-Jean-de-Brébeuf

36.59 KM away

High

620 River Rd, Welland, ON L3B 5N4, Canada

L'école secondaire catholique Saint-Jean-de-Brébeuf a été fondée en 1992 dans le but d'offrir à nos adolescents une chance équitable de poursuivre leurs études au palier secondaire dans un milieu de vie catholique francophone où ils auraient l'occasion d'affirmer leur appartenance à la collectivité franco-ontarienne.

<https://esjdb.cscmonavenir.ca...>

Address	620 River Rd, Welland, ON L3B 5N4, Canada
Language	French
Date Opened	01-09-1993
Grade Level	High
Orientation	Catholic
School Type	Public
Phone Number	905-714-7882
School Board	CS catholique MonAvenir
School Number	782017
Grades Offered	9 to 12
Additional Details	Religious

School Board Number	B67318
District Description	Toronto and Area Regional Office

PRIVATE SCHOOLS

See a list of the closest private schools near you:

Trail Ridge Montessori School

3.22 KM away

PARKS & REC.

Whether you want to sit at a park bench with a good book or use one of the special facilities offered, you'll be happy to know that your neighbourhood is close to many wonderful recreational opportunities. See Parks and Recreation facilities near you below:

Casablanca Beach Park about a 4 minute walk - 0.3 KM

565 N Service Rd, Grimsby, ON, Canada

One of our newest parks, this linear waterfront park is a perfect place to go for a stroll, enjoy a picnic and take in the lakeside. This park offers a linear trail that goes along the waterfront, 2 beach areas, including one sand beach, a small park pavilion, and several benches and interpretive plaques.

1 Trail, 2 Beaches, and 1 Picnic Facilities

<https://facilities.grimsby.ca...>

Magnolia Crescent Playground about a 12 minute walk - 0.87 KM

Magnolia Crescent

1 Playground

<https://www.grimsby.ca...>

Aspen Dr Park about a 15 minute walk - 1.11 KM

Aspen Dr

1 Playground, and 1 Basketball Court

<https://www.grimsby.ca...>

Oriole Park about a 17 minute walk - 1.25 KM

47-37 Oriole Crescent, Grimsby, ON L3M 3X7, Canada

1 Playground, and 1 Sports Field

<https://www.grimsby.ca...>

TRANSIT

The public transit system can be an easy, cost-effective and efficient way of getting around the city, accessible from your neighbourhood. See the closest Public Transit stops near you below:



The nearest rail transit stop is Grimsby GO Bus



about a 7 minute walk - 0.5 KM

<https://www.viarail.ca...>



The nearest street-level transit stop is Casablanca Blvd. @ QEW Park & Ride



about a 6 minute walk - 0.45 KM

<https://www.gotransit.com...>

SAFETY

Every second matters in an emergency, and your neighbourhood is part of a dedicated safety system of emergency agencies including Fire Stations, Police Stations, and Hospitals. See the closest facilities near you below:



West Lincoln Memorial Hospital

WLMH has been providing exceptional care and service to over 65,000 residents of West Niagara since 1946. WLMH officially became a site of Hamilton Health Sciences in 2013 through amalgamation. On average each year, staff and physicians at WLMH care for more than: 25,000 individuals who visit the Emergency Department, 2,900 patients who are admitted to the hospital, and 1,000 babies and moms. In addition, WLMH performs over 3,700 surgeries, of which 80 per cent are on an outpatient basis. WLMH is unique in its focus on integrating primary care.

5.07 KM away

Type	Chronic Care, Emergency Care and General
Address	169 Main St E, Grimsby, ON, L3M 1P3, Canada
Phone Number	905-945-2253

<https://www.hamiltonhealthsciences.ca...>



The nearest fire station is Grimsby Fire Department - Station 1

3.42 KM away

Address	261 Ontario St, Grimsby, ON L3M 5J2, Canada
---------	---

<https://www.grimsby.ca...>

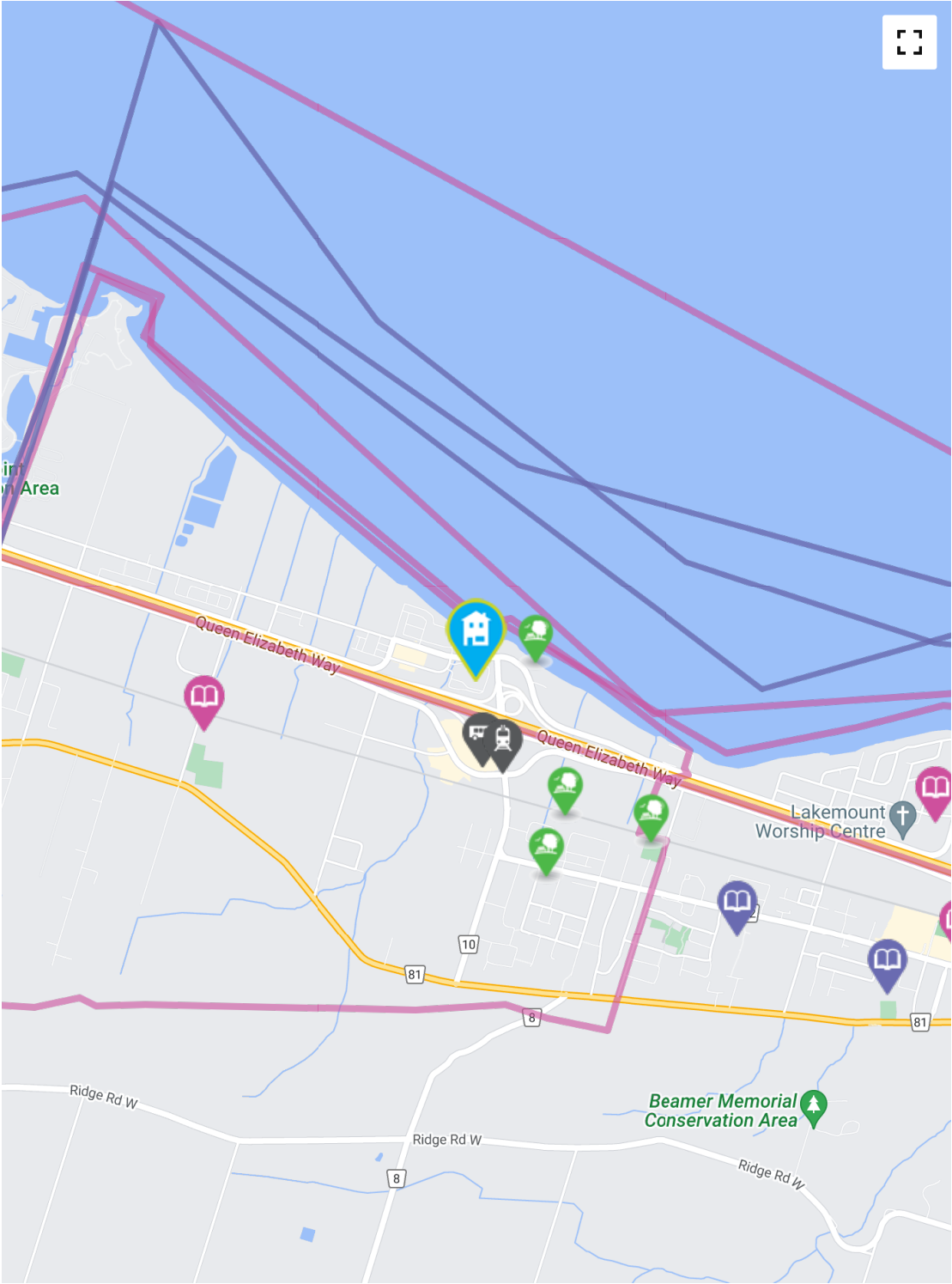


The nearest police facility is Niagara Regional Police Service - 8 District

3.83 KM away

Address	45 Clarke St, Grimsby, ON L3M 3H3
---------	-----------------------------------

<https://www.niagarapolice.ca...>



Map data ©2022 Google [Report a map error](#)

Elementary Schools

Middle Schools

High Schools

Transit

Safety

Elementary
Attendance
Zone

Middle
Attendance
Zone

High
Attendance
Zone

Parks

HoodQ

Disclaimer: These materials have been prepared for mikehedge@royallepage.ca and are not intended to solicit buyers or sellers currently under contract with a brokerage. By accessing this information you have agreed to our terms of service, which are hereby incorporated by reference. This information may contain errors and omissions. You are not permitted to rely on the contents of this information and must take steps to independently verify its contents with the appropriate authorities (school boards, governments etc.). As a recipient of this information, you agree not to hold us, our licensors or the owners of the information liable for any damages, howsoever caused.